



Sherman Gardens, Romford RM6 4AP

**£255,000
Leasehold**

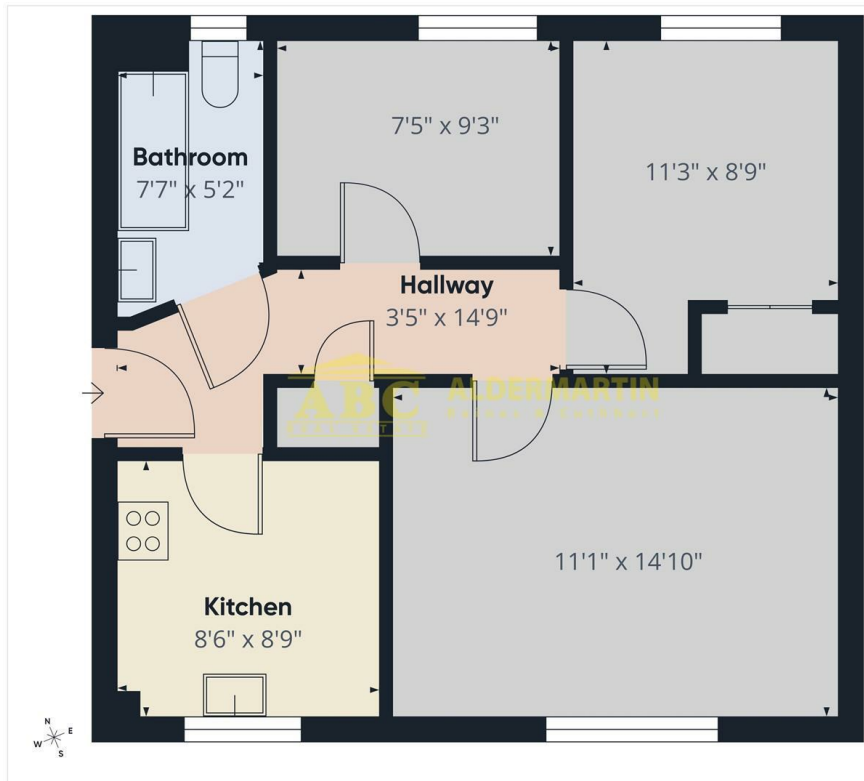




- FIRST FLOOR FLAT
- PARKING
- EPC RATING C

- TWO BEDROOMS
- COMMUNAL GARDENS
- COUNCIL TAX BAND C

- SEPARATE KITCHEN
- POPULAR COMPLEX
- QUIET LOCATION

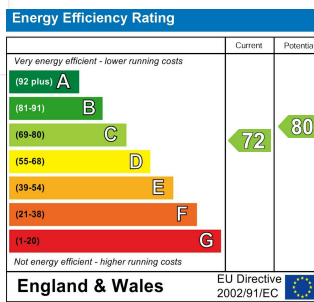


Approximate total area^m
519 ft²

(1) Excluding balconies and terraces

Calculations reference the RICS IPMS 3C standard. Measurements are approximate and not to scale. This floor plan is intended for illustration only.

GIRAFFE360



Nestled in the charming area of Sherman Gardens, Chadwell Heath, Romford, this well presented first floor flat presents an excellent opportunity for those seeking a a first home or an investment property. The location itself is a significant highlight, offering a blend of suburban tranquillity and convenient access to local amenities.

Chadwell Heath is well-regarded for its community spirit and family-friendly atmosphere. Residents can enjoy nearby parks, schools, and a variety of shops, making it an ideal setting for families and professionals alike. The area is well-connected, with excellent transport links to central London, ensuring that commuting is both easy and efficient.

In summary, this property in Sherman Gardens is a promising opportunity for anyone looking to settle in a vibrant and accessible part of Romford. With its appealing location and the potential for transformation, it is certainly worth considering for your first or next home.

ABC Hendon Sales
020 8203 4567

